



# INDOFINE Chemical Company, Inc.

121 Stryker Lane, Bldg. 30, Suite 1 • Hillsborough, NJ 08844 • U.S.A.

Phone: (908) 359-6778 • FAX: (908) 359-1179

website: [www.indofinechemical.com](http://www.indofinechemical.com)

e-mail: [chemical@indofinechemical.com](mailto:chemical@indofinechemical.com)

## CERTIFICATE OF ANALYSIS

Catalog Number: 021334S

Product Name: **SCUTELLAREIN with HPLC**  
(6-Hydroxyapigenin, 5,6,7,4'-Tetrahydroxyflavone)

CAS Number: [529-53-3]

Lot Number: 1611922

Chemical Formula: C<sub>15</sub>H<sub>10</sub>O<sub>6</sub>

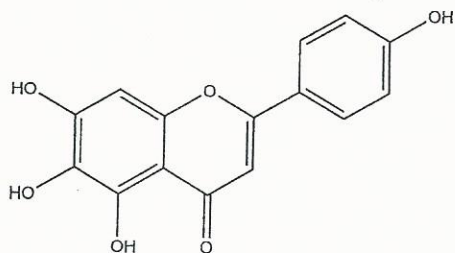
Molecular Weight: 286.24

Appearance: Soil yellow powder

Loss on Drying: 1.12%

Storage: Store at 2-8°C

Purity(HPLC): 98.64%





# INDOFINE Chemical Company, Inc.

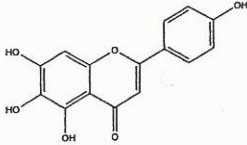
121 Stryker Lane, Bldg. 30, Suite 1 • Hillsborough, NJ 08844 • U.S.A.

Phone: (908) 359-6778 • FAX: (908) 359-1179

website: [www.indofinechemical.com](http://www.indofinechemical.com)

e-mail: [chemical@indofinechemical.com](mailto:chemical@indofinechemical.com)

## HPLC ANALYSIS

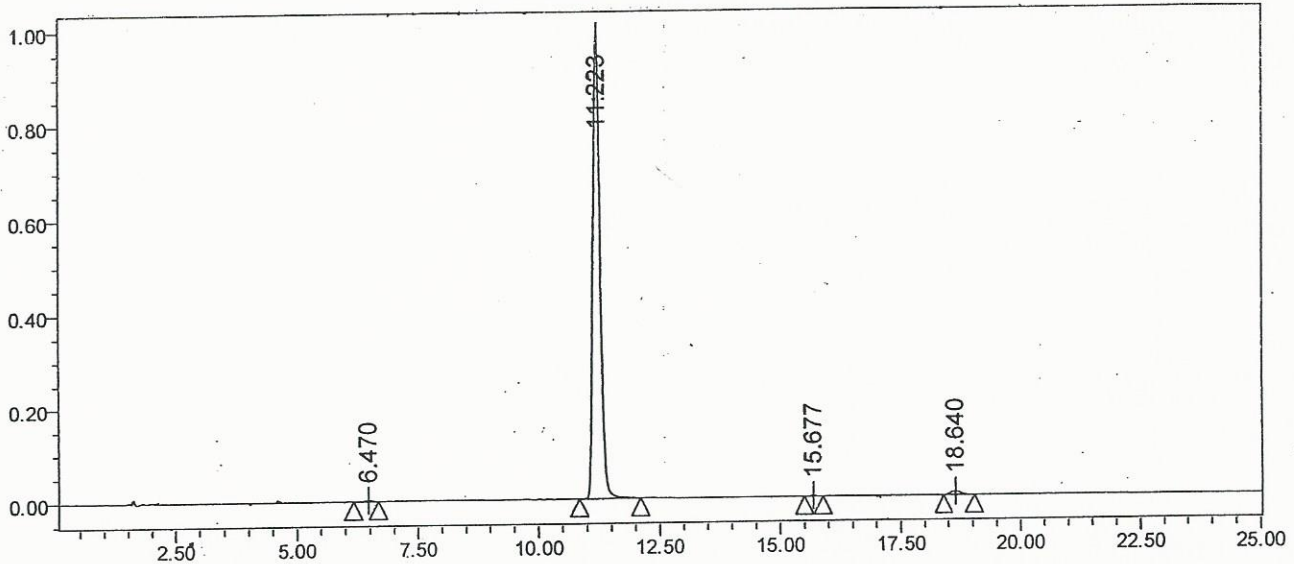


Catalog No.: 021334S  
Product Name: Scutellarein  
Lot No.: 1611922

### SAMPLE INFORMATION

|                   |              |                     |              |
|-------------------|--------------|---------------------|--------------|
| Sample Name:      | Scutellarein | Acquired By:        | System       |
| Sample Type:      | Unknown      | Sample Set Name:    |              |
| Vial:             | 20           | Acq. Method Set:    | Scutellarein |
| Injection #:      | 1            | Processing Method:  | Samples      |
| Injection Volume: | 5.00 ul      | Channel Name:       | 335.0nm      |
| Run Time:         | 25.0 Minutes | Proc. Chnl. Descr.: | PDA 335.0 nm |

### Auto-Scaled Chromatogram



### Peak Results

|   | RT     | Area     | % Area | USP Plate Count | USP Resolution |
|---|--------|----------|--------|-----------------|----------------|
| 1 | 6.470  | 20889    | 0.20   | 14968.70        |                |
| 2 | 11.223 | 10166617 | 98.64  | 27712.91        | 19.37          |
| 3 | 15.677 | 12220    | 0.12   | 60158.53        | 16.51          |
| 4 | 18.640 | 107265   | 1.04   | 45603.45        | 9.56           |